

宗 地 图

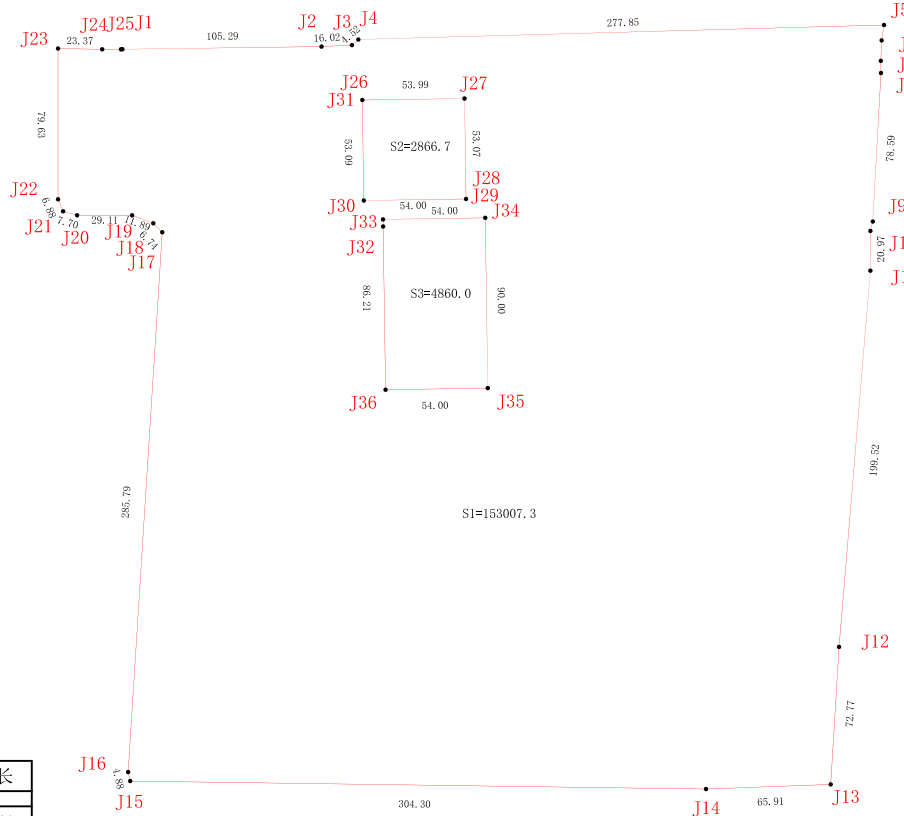
土地权利人：陆丰市碣石镇人民政府

坐落：陆丰市碣石镇南溪河边

用地面积：145280.6m²

单位：m.m²

北



S1

界址点坐标表

点号	X	Y	边长
J1	2523194.150	39378705.819	105.29
J2	2523195.533	39378811.099	16.02
J3	2523196.333	39378827.099	4.52
J4	2523199.303	39378830.510	277.85
J5	2523206.977	39379108.255	8.26
J6	2523198.807	39379107.012	10.81
J7	2523188.008	39379106.567	6.43
J8	2523181.577	39379106.656	78.59
J9	2523103.108	39379102.307	5.12
J10	2523098.141	39379101.081	20.97
J11	2523077.172	39379101.036	199.52
J12	2522878.334	39379084.514	72.77
J13	2522805.695	39379080.108	65.91
J14	2522803.224	39379014.244	304.30
J15	2522807.457	39378709.972	4.88
J16	2522812.220	39378708.914	285.79
J17	2523097.441	39378726.906	6.74
J18	2523102.204	39378722.143	11.89
J19	2523106.437	39378711.031	29.11
J20	2523106.437	39378681.926	7.70
J21	2523108.554	39378674.518	6.88
J22	2523114.904	39378671.872	79.63
J23	2523194.536	39378671.857	23.37
J24	2523194.132	39378695.225	9.87
J25	2523194.132	39378705.099	0.71
26	2523194.150	39378705.807	0.01
J1	2523194.150	39378705.819	
S=153007.3 平方米 合229.5109亩			

注：本图红线面积145280.6m² (S=S1-S2-S3)

S2

界址点坐标表

点号	X	Y	边长
J26	2523167.308	39378832.650	53.99
J27	2523168.103	39378886.632	53.07
J28	2523115.040	39378887.413	0.02
J29	2523115.022	39378887.413	54.00
J30	2523114.227	39378833.419	53.09
J31	2523167.308	39378832.638	0.01
J26	2523167.308	39378832.650	
S=2866.7 平方米 合4.3000亩			

S3

界址点坐标表

点号	X	Y	边长
J32	2523100.455	39378843.634	3.79
J33	2523104.246	39378843.578	54.00
J34	2523105.041	39378897.572	90.00
J35	2523015.051	39378898.897	54.00
J36	2523014.256	39378844.903	86.21
J32	2523100.455	39378843.634	
S=4860.0 平方米 合7.2899亩			